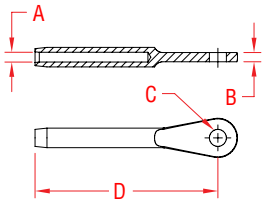


MIL. SPEC SWAGE EYE

STAINLESS STEEL



| ITEM | A | B | C | D | BEFORE | AFTER | WT |
|------------|--------|-------|-------|-------|---------|---------|------|
| | (wire) | | | | (swage) | (swage) | (lb) |
| MS20668-2 | 1/16" | 0.09" | 0.19" | 1.63" | 0.160" | 0.138" | 0.01 |
| MS20668-3 | 3/32" | 0.10" | 0.19" | 2.04" | 0.218" | 0.190" | 0.02 |
| MS20668-4 | 1/8" | 0.19" | 0.19" | 2.34" | 0.250" | 0.219" | 0.03 |
| MS20668-5 | 5/32" | 0.20" | 0.25" | 2.68" | 0.297" | 0.250" | 0.05 |
| MS20668-6 | 3/16" | 0.26" | 0.31" | 3.02" | 0.359" | 0.313" | 0.09 |
| MS20668-8 | 1/4" | 0.31" | 0.38" | 3.76" | 0.494" | 0.438" | 0.19 |
| MS20668-10 | 5/16" | 0.34" | 0.44" | 4.55" | 0.635" | 0.563" | 0.37 |
| MS20668-12 | 3/8" | 0.38" | 0.50" | 5.56" | 0.703" | 0.625" | 0.58 |

NOTE: THESE FITTINGS MEET MIL SPEC #MS20668 AND HAVE MET ALL QUALITY AND TESTING REQUIREMENTS PER MIL-DTL-781 AND ARE APPROVED FOR LISTING IN QPL-781. MACHINE SWAGE ONLY.

MIL.SPEC