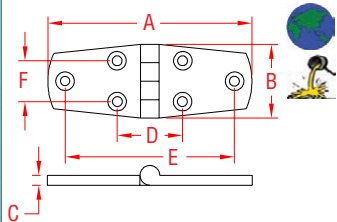


# HEAVY DUTY DOOR HINGE, EQUAL

**316 STAINLESS STEEL**



**ITEM**

**A**

**B**

**C**

**D**

**E**

**F**

**WT**

(length)

(lb)

S3822-0075

3"

1.47"

0.19"

1.12"

2.35"

0.80"

0.21

S3822-0100

4"

1.47"

0.17"

1.34"

3.44"

0.82"

0.26

**NOTE:**

**USE 6 #10 FASTENERS.**

**HEAVY DUTY HINGE WITH PRECISION CAST COMPONENTS.  
PIN IS STAINLESS AND WELDED ON ONE SIDE TO PREVENT  
IT FROM WORKING LOOSE.**

**REFERENCE "FASTENER MATCHING CHART" (PAGE 159)  
FOR COMPATIBLE FASTENERS.**