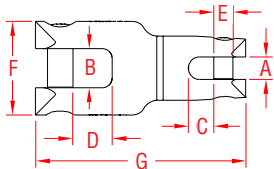


# ANCHOR SWIVEL

**17-4 PH STAINLESS STEEL**



**ITEM**

**SIZE**

**A**

**B**

**C**

**D**

**E**

**F**

**G**

**BL**

**WT**

(for chain)

(lb)

(lb)

S0190-0008	1/4 - 5/16"	0.38"	0.65"	0.50"	0.81"	0.31"	1.90"	3.81"	8,500	0.96
S0190-0013	3/8 - 1/2"	0.59"	0.85"	0.67"	1.25"	0.50"	2.35"	5.50"	15,000	2.18
S0190-0020	1/2 - 3/4"	0.88"	1.52"	1.01"	1.53"	0.75"	3.64"	8.24"	25,000	9.39

**NOTE:**

**HEAVY DUTY ANCHOR RODE SWIVEL. SLEEK DESIGN WITH SOLID SCREW PINS. SWIVEL SPINS 360 DEGREES. EQUIPPED WITH SOLID BRONZE THRUST WASHER. THREAD LOCKING LIQUID INCLUDED FOR CROSS PINS.**

**REPLACEMENT PINS**

S0190-RP08	5/16"
S0190-RP13	1/2"
S0190-RP20	3/4"