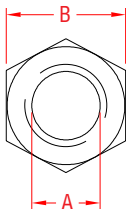


HEX NUTS

316 STAINLESS STEEL



ITEM	A	B	THREAD	WT
	(size)	(wrench)		(lb)
LEFT HAND - "UNC"				
S0302-0005	3/16"	0.31"	5/16"	10 - 24 .25/100
S0302-0007	1/4"	0.43"	7/16"	1/4" - 20 .42/100
S0302-0008	5/16"	0.47"	1/2"	5/16" - 18 .82/100
S0302-0010	3/8"	0.54"	9/16"	3/8" - 16 1.5/100
S0302-0013	1/2"	0.75"	3/4"	1/2" - 13 3.5/100
S0302-0016	5/8"	0.94"	15/16"	5/8" - 11 7.0/100
S0302-0020	3/4"	1.13"	1-1/8"	3/4" - 10 13.0/100
S0302-0025	1"	1.51"	1-1/2"	1" - 8 31.0/100
S0302-0028	1-1/8"	1.65"	1-5/8"	1-1/8" - 7 40.0/100
S0302-0032	1-1/4"	1.77"	1-3/4"	1-1/4" - 7 58.0/100
RIGHT HAND - "UNC"				
S0303-0005	3/16"	0.31"	5/16"	10 - 24 .25/100
S0303-0007	1/4"	0.43"	7/16"	1/4" - 20 .42/100
S0303-0008	5/16"	0.47"	1/2"	5/16" - 18 .82/100
S0303-0010	3/8"	0.54"	9/16"	3/8" - 16 1.5/100
S0303-0013	1/2"	0.75"	3/4"	1/2" - 13 3.5/100
S0303-0016	5/8"	0.94"	15/16"	5/8" - 11 7.0/100
S0303-0020	3/4"	1.13"	1-1/8"	3/4" - 10 13.0/100
S0303-0025	1"	1.51"	1-1/2"	1" - 8 31.0/100
S0303-0028	1-1/8"	1.65"	1-5/8"	1-1/8" - 7 40.0/100
S0303-0032	1-1/4"	1.77"	1-3/4"	1-1/4" - 7 58.0/100
RIGHT HAND - METRIC				
S0303-MM05	5 mm	0.31"	5/16"	M5 x 0.8 .25/100
S0303-MM06	6 mm	0.38"	3/8"	M6 x 1.0 .45/100
S0303-MM10	10 mm	0.65"	5/8"	M10 x 1.5 2.0/100
S0303-MM12	12 mm	0.74"	3/4"	M12 x 1.75 3.5/100
S0303-MM16	16 mm	0.93"	15/16"	M16 x 2.0 8.0/100
S0303-MM20	20 mm	1.17"	1-3/16"	M20 x 2.5 12.0/100
LEFT HAND - STANDARD "UNF"				
S0304-0005	3/16"	0.31"	5/16"	10 - 32 .25/100
S0304-0007	1/4"	0.43"	7/16"	1/4" - 28 .42/100
S0304-0008	5/16"	0.47"	1/2"	5/16" - 24 .82/100
S0304-0010	3/8"	0.54"	9/16"	3/8" - 24 1.5/100
S0304-0013	1/2"	0.75"	3/4"	1/2" - 20 3.5/100
S0304-0016	5/8"	0.94"	15/16"	5/8" - 18 7.0/100
S0304-0020	3/4"	1.09"	1-1/8"	3/4" - 16 10.0/100
RIGHT HAND - STANDARD "UNF"				
S0305-0005	3/16"	0.31"	5/16"	10 - 32 .25/100
S0305-0007	1/4"	0.43"	7/16"	1/4" - 28 .42/100
S0305-0008	5/16"	0.47"	1/2"	5/16" - 24 .82/100
S0305-0010	3/8"	0.54"	9/16"	3/8" - 24 1.5/100
S0305-0013	1/2"	0.75"	3/4"	1/2" - 20 3.5/100
S0305-0016	5/8"	0.94"	15/16"	5/8" - 18 7.0/100
S0305-0020	3/4"	1.09"	1-1/8"	3/4" - 16 10.0/100