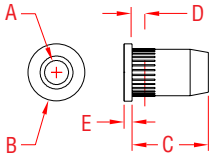


RIVET NUT INSERT

316 STAINLESS STEEL



ITEM	A	B	C	D	E	THREAD	WT
				(max grip)			(lb)
UNF, RIGHT AND LEFT							
S0381-0007	1/4"	0.43"	0.58"	0.14"	0.06"	1/4" x 28 RH	0.01
S0381-L007	1/4"	0.43"	0.58"	0.14"	0.06"	1/4" x 28 LH	0.01
UNC, RIGHT AND LEFT							
S0382-0005	3/16"	0.35"	0.48"	0.12"	0.04"	10 x 24 RH	0.01
S0382-0007	1/4"	0.43"	0.58"	0.14"	0.06"	1/4" x 20 RH	0.01
S0382-L007	1/4"	0.43"	0.58"	0.14"	0.06"	1/4" x 20 LH	0.01
S0382-0008	5/16"	0.55"	0.64"	0.16"	0.06"	5/16" x 18 RH	0.01
S0382-0010	3/8"	0.63"	0.84"	0.22"	0.06"	3/8" x 16 RH	0.02

NOTE:
FOR INSTALLATION IN THIN WALL METAL PLATES OR TUBES.
RIVET NUT INSTALLATION TOOL IS ITEM #S0380-0000 (PAGE 53).