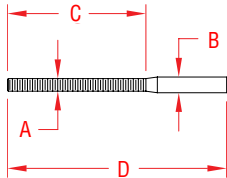


# RAIL SWAGE STUD, UNC

**316 STAINLESS STEEL**



ITEM	A (thread)	B (wire)	C	D	BEFORE (swage)	AFTER (swage)	WT (lb)
<b>RIGHT-UNC</b>							
S0729-0703	1/4" UNC	1/8"	2.25"	4.00"	0.250"	0.219"	0.04
S0729-0704	1/4" UNC	5/32"	2.25"	4.00"	0.297"	0.250"	0.05
S0729-0705	1/4" UNC	3/16"	2.25"	4.00"	0.359"	0.313"	0.06
<b>LEFT-UNC</b>							
S0730-0703	1/4" UNC	1/8"	2.25"	4.00"	0.250"	0.219"	0.04
S0730-0704	1/4" UNC	5/32"	2.25"	4.00"	0.297"	0.250"	0.05
S0730-0705	1/4" UNC	3/16"	2.25"	4.00"	0.359"	0.313"	0.06

**NOTE:**

**MACHINE SWAGE ONLY. THIS SLEEK SWAGE STUD IS IDEAL FOR ARCHITECTURAL APPLICATIONS. FOR PROPER FUNCTIONING, OBSERVE CORRECT "AFTER" DIMENSIONS.**