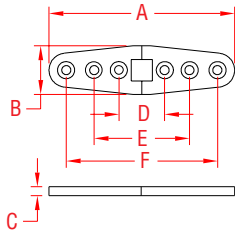


# FLUSH STRAP HINGE

**316 STAINLESS STEEL**



**ITEM**

**A**

**B**

**C**

**D**

**E**

**F**

**WT**

(length)

(lb)

**HEAVY DUTY**

S3831-0001

4"

0.97"

0.19"

1.40"

3.40"

N/A

0.16

S3831-0002

6"

1.00"

0.19"

1.20"

3.18"

5.15"

0.24

**NOTE:**

**USE 4 #10 FASTENERS.**

**EXCLUSIVE FLUSH DESIGN CAN MOVE 360 DEGREES. ONE HALF FOLDS FLAT ON TOP OF OTHER HALF. IDEAL FOR TABLES, DOORS AND OTHER APPLICATIONS WHERE RECESSED HINGES ALLOW A TOTALLY FLAT SURFACE.**

**REFERENCE "FASTENER MATCHING CHART" (PAGE 159) FOR COMPATIBLE FASTENERS.**